

TOLT PLACE

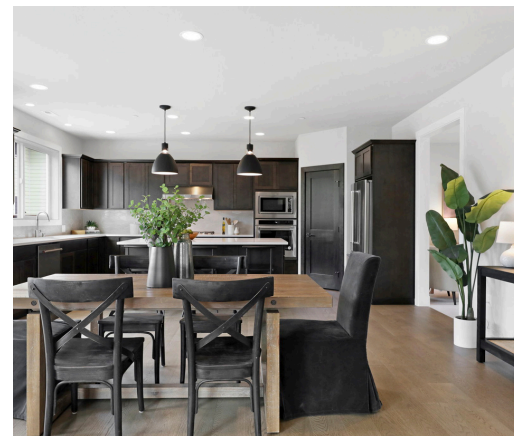
CARNATION

LOT 2
\$25,000
 BUYER BONUS
 FOR CLOSING
 BEFORE 1/31/2025



HOMESITE	PLAN	SQFT.	PRICE	AVAILABILITY
1	Rainier	3450	TBD	Coming Soon
2	Aspen	3520	\$1,464,880	COMPLETE
3	Peak	3687	TBD	Coming Soon
4	Teneriffe	3288	TBD	Coming Soon
5	Teneriffe	3288	TBD	Coming Soon
6	Peak	3687	TBD	Coming Soon
7	Rampart	3293	TBD	Coming Soon
8	Rainier	3450	TBD	Coming Soon
9	Hyak	3261	TBD	Coming Soon
10	Peak	3687	TBD	Coming Soon
11	Chinook	3180	TBD	Coming Soon
12	Aspen	3520	\$1,475,880	APRIL 2025

Tolt Place, a neighborhood of 12 homes in Carnation, WA, offers John Day Homes renowned quality. Located 32 miles from Seattle in the scenic Snoqualmie Valley, Carnation boasts small-town charm and proximity to Redmond and Issaquah. Homes feature 4-5 bedrooms, 2.5-2.75 baths, and designer finishes in floorplans ranging from 3180-3687 sq ft. Outdoor enthusiasts will enjoy nearby parks, trails, golf courses, and river activities.



Contact Laura Faulkner | Broker

✉ LAURAF@NWHOMEQUITY.COM

📞 425-466-8778

🌐 WWW.JOHNDAYHOMES.COM

PLAT MAP

TOLT PLACE

LOT 2
\$25,000
BUYER BONUS
FOR CLOSING
BEFORE 1/31/2025



Contact Laura Faulkner | Broker

✉ LAURAF@NWHOMEQUITY.COM

📞 425-466-8778

🌐 WWW.JOHNDAYHOMES.COM



**JOHN DAY
HOMES**

Nothing contained herein shall be deemed as a warranty of the accuracy of the information as set forth. All square footages showing are approximate. Square footage shown may differ from square footage in public offering statement. Model furnishings not included. Prices and incentives are subject to change without notice. Pictures depict a previously built home similar to the home going to be built on this lot. Floor plans, Elevations, colors and materials may be different.